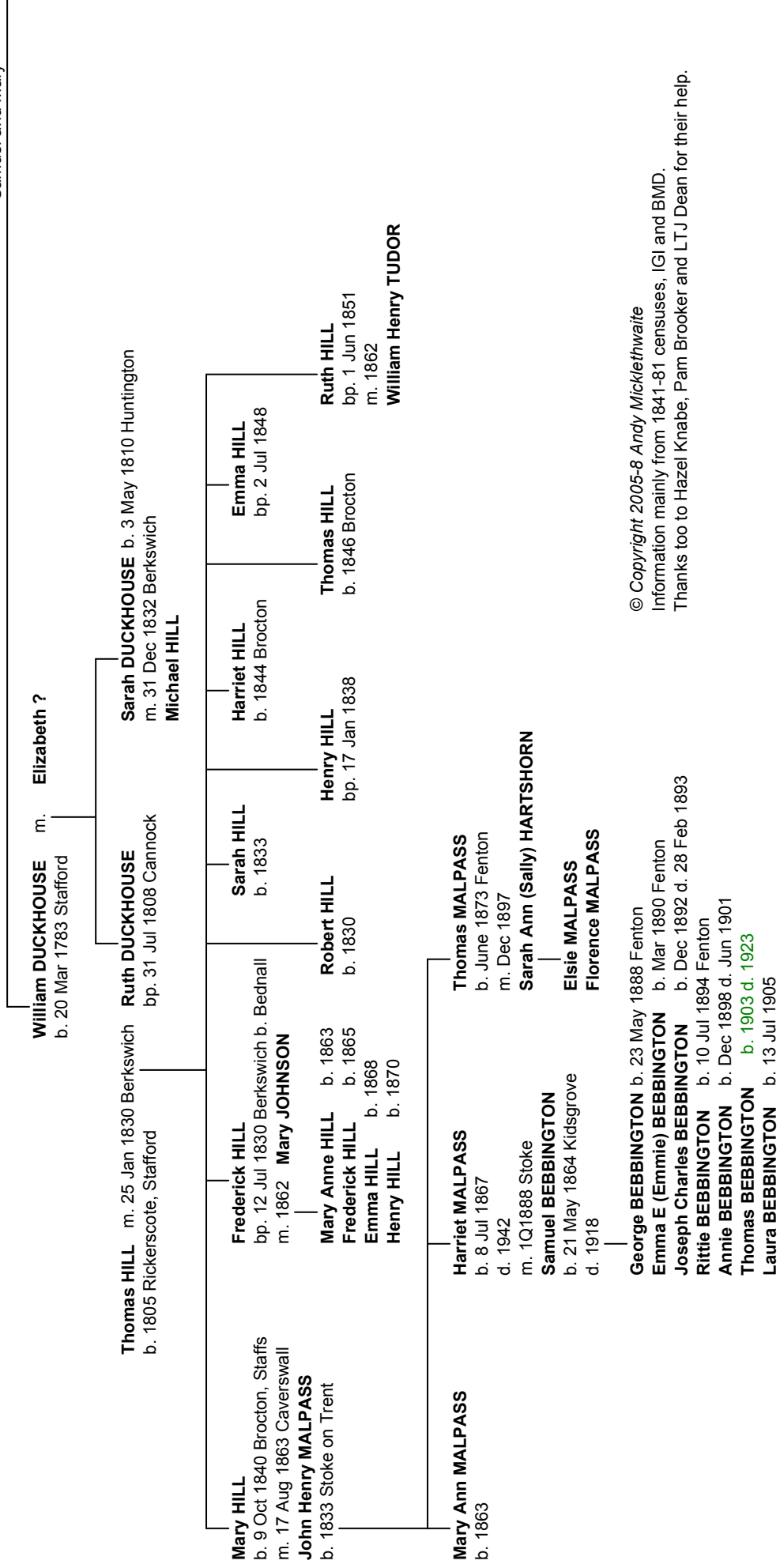


The DUCKHOUSES from Stafford and Cannock

Samuel and Mary



© Copyright 2005-8 Andy Micklethwaite

Information mainly from 1841-81 censuses, IGI and BMD

Thanks too to Hazel Knabe, Pam Brooker and LTJ Dean for their help.

William MILLS
m.
Susanne

Samuel DUCKHOUSE m. 8 Dec 1782 Colwich
b. abt 1755
bur. 12 Jun 1834 Cannock age 79

Mary MILLS
bp. 16 Feb 1768 Staff St Mary
d. 1833

Samuel DUCKHOUSE bp. 1 Jun 1785 Castle Ch. m. 31 Jan 1809 Wolv **Elizabeth HORTON**

Sarah DUCKHOUSE
bp. 9 Mar 1788 Cannock

Ann DUCKHOUSE bp. 29 Aug 1813 Wed'fd m. 13 Mar 1836 Berkswich **Robert SMALLWOOD**
Emma DUCKHOUSE bp. 25 Dec 1815 Wed'fd m. 1841 West Brom **Richard PUGH**
George DUCKHOUSE bp. 7 Jun 1818 Cannock m1. 19 Oct 1840 Sedgley **Mary Ann DERBYSHIRE** m2. 1 Aug 1854 B'ham **Sarah MARKWICK**
Harriet DUCKHOUSE bp. 9 Apr 1821 Cannock
Charles DUCKHOUSE bp. 5 Feb 1825 Penkridge **Abraham DUCKHOUSE** b. 1842 Oldbury
Henry DUCKHOUSE bp. 16 Sep 1810 Cannock **George DUCKHOUSE** b. 1853 Oldbury m. Sep 1872 Kings N. **Mary Jane HUGHES**
Eliza DUCKHOUSE bp. 13 May 1832 Penk
Julia DUCKHOUSE bp. 14 Jul 1835 Cannock m. 1857 West Brom **Henry HARVEY**
Daniel DUCKHOUSE bp. 24 Nov 1823 Cannock m. 13 Mar 1848 West Brom **Jane DARBYSHIRE**

Charles DUCKHOUSE b. 1852 Oldbury m. **Sarah ?**
Elizabeth DUCKHOUSE b. 1855 Oldbury
George DUCKHOUSE b. 1857 Oldbury **Charles Arthur DUCKHOUSE** b. 1875 Langley
William DUCKHOUSE b. 1860 Oldbury **John William DUCKHOUSE** b. 1879 Stourbridge
Sarah DUCKHOUSE b. 1868 **Sarah Jane DUCKHOUSE** b. 1880 Langley
Mary DUCKHOUSE b. 1865 m. **Thomas BELLAMY**

Thomas DUCKHOUSE
bp. 27 Apr 1828 Penkridge m. 15 Jun 1857 Dudley **Susanna LEWIS**

Michael DUCKHOUSE

bp. 25 Dec 1811 Cannock
m. 1 Feb 1841 Tipton

Mary Ann TAYLOR

Jacob DUCKHOUSE b. 1858 Tipton

Esau DUCKHOUSE b. 1861 Tipton m. Sep 1883 Dudley **Lucy SHAKESPEARE**

Emma DUCKHOUSE bp. 5 Oct 1887 Dudley

Thomas DUCKHOUSE b. 1841 West Brom

Eilen DUCKHOUSE b. 1843 West Brom **?m. SepQ 1868 Shadrach ROBERTS**

Henry DUCKHOUSE bp. 25 Oct 1846 Darlaston

Sarah Ann DUCKHOUSE b. 1847 West Brom

Mary Ann DUCKHOUSE bp. 6 May 1849 Tipton

Lydia DUCKHOUSE bp. 31 Jul 1853 Darlaston m. 2 Apr 1877 B'ham **Alfred RUSSELL**

Julia DUCKHOUSE b. 1855 Darlaston m. 17 Nov 1879 Rushall **Henry HUNTER**

Michael or William DUCKHOUSE b. 1858 Darlaston m. 17 Jun 1879 Walsall **Martha DAVIS**

Charles DUCKHOUSE b. 1853 Darlaston

m. 15 Jul 1878 Walsall **Selina PINCHES**

Louisa Eleanor DUCKHOUSE bp. 31 Oct 1878 Walsall

Selina Elizabeth DUCKHOUSE bp. 11 Dec 1881 Walsall

Florence DUCKHOUSE b. 1873 Oldbury
Ellen E DUCKHOUSE b. 1875 Warks
m. **Samuel MEALINGS**

Sarah L DUCKHOUSE b. 1877 Warks
Alice DUCKHOUSE b. 1879 Warks

Bertha C DUCKHOUSE bp. 8 Jul 1883 B'ham

Jane DUCKHOUSE bp. 8 Jul 1883 B'ham

Mary Ann DUCKHOUSE bp. 6 Sep 1886 B'ham

Jessie DUCKHOUSE bp. 4 Dec 1891 B'ham

Samuel and Mary

Charles DUCKHOUSE b. 1790 Huntington
m1. 5 Aug 1813 Dudley **Mary WOOLLEY**
m2. 6 Sep 1820 Dudley
Hannah TRANTER
Harriet DUCKHOUSE
b. 1816 d. 1819

Reuben DUCKHOUSE bp. 11 Feb 1821 Weds'fd
Harrlott DUCKHOUSE bp. 14 Jul 1822 Willenhall
Eliza DUCKHOUSE bp. 18 Jan 1824 Willenhall
m. 4 Feb 1845 Rushall **Samuel MORRALL**
Caren DUCKHOUSE bp. 16 Apr 1826 Willenhall
m. 18 Nov 1844 B'ham **Philip MORRALL**
Louisa DUCKHOUSE bp. 22 Nov 1829 Willenhall
Charles DUCKHOUSE bp. 14 Sep 1828 Willenhall
m. **Frances COLLINS**

Mary E DUCKHOUSE b. 1858 Wolv
John DUCKHOUSE b. 1861 Wolv
Frances DUCKHOUSE b. 1864 Wolv
William DUCKHOUSE b. 1868 Wolv
Charles DUCKHOUSE b. 1874 Wolv
Thomas A DUCKHOUSE b. 1856 Weds'fd m. **Mary LINER**

Ida E DUCKHOUSE b. 1881 B'ham
Francis John DUCKHOUSE b. 1892

Moses DUCKHOUSE b. 1832 Willenhall
m. Sep 1862 Walsall **Elizabeth DUKES**

Moses DUCKHOUSE b. 1866 Cannock
Kate DUCKHOUSE b. 1869 Cannock
Edmund DUCKHOUSE b. 1871 Cannock
m. **Louisa ?**

Kate DUCKHOUSE bp. 2 Aug 1893 Hedn'd

Mary DUCKHOUSE
bp. 25 Mar 1792 Cannock
d. 2 Feb 1853 Hednesford
m. 23 Jan 1815 Wolv
William DEAN

William DUCKHOUSE bp. 26 Aug 1818 Pelsall
Hannah DUCKHOUSE bp. 2 Apr 1820 Pelsall
John DUCKHOUSE b. 5 Jun 1825 Cannock d. 12 Sep 1825
Samuel DUCKHOUSE b. 29 Nov 1829 Cannock
Caroline DUCKHOUSE bp. 1 Apr 1838 Cannock d. Jan 1848
David DUCKHOUSE bp. 13 Sep 1835 Cannock
m. 1861 West Brom **Mary Ann BEDDOWS**

Ada A DUCKHOUSE b. 1878 Walsall
Albert G DUCKHOUSE b. 1876 Walsall
David DUCKHOUSE b. 1873 Darlaston
Mary Ann DUCKHOUSE b. 1881 Walsall
Samuel DUCKHOUSE b. 1864 Stubbers Gn

Frederic DUCKHOUSE bp. 10 Feb 1833 Cannock
m. **Hannah ?**

John DUCKHOUSE b. 1867 Walsall
Mary A DUCKHOUSE b. 1870 Darlaston

George DUCKHOUSE
bp. 26 Jan 1794 Cannock d. Dec 1854
m. 19 Oct 1817 Wolv.
Prudence WOOTTEN
b. 1793 d. 1841

Joseph DUCKHOUSE b. 17 Nov 1822 Hunt.
m. 9 Feb 1851 Bloxwich
Annie TOOTH

Caroline DUCKHOUSE bp. 23 May 1852 Cannock
m. **George WILDBER**
Emily DUCKHOUSE bp. 26 Feb 1854 Cannock
Alfred DUCKHOUSE b. 1860 Cheslyn Hay
Joseph DUCKHOUSE bp. 18 Jan 1857 Gt Wyrley
Mary E DUCKHOUSE b. 1868 Heds'fd
m. 1891 Hed'fd **Joseph ROGERS**
Thos Saml DUCKHOUSE b. 1863 Heds'fd
m. 1887 Hed'fd **Mary Jane TOOTH**

Job DUCKHOUSE bp. 1 Jul 1827 Cannock d. 1904
m. 26 Dec 1870 Wednesbury
Hannah JENKINS b. 1839 d. 1898

Job DUCKHOUSE b. 1874 West Brom d. 1945
m. 16 May 1900 Wolv
Emma Jane FORD b. 1876 d. 1944

John DUCKHOUSE m. 16 Jul 1804 Stafford **Ann BILL**

Elizabeth DUCKHOUSE bp. 22 Apr 1805 Stafford
Ellen DUCKHOUSE bp. 31 Mar 1807 Stafford
Mary DUCKHOUSE bp. 17 May 1815 Stafford
Peter DUCKHOUSE bp. 19 May 1809 Stafford
m. 4 Apr 1831 Stafford **Mary JENKINSON**

Louisa DUCKHOUSE b. 1836 Stafford
m. 13 Aug 1865 Stafford **Thomas JENKINSON**
William DUCKHOUSE bp. 12 Dec 1838 Stafford
Mary DUCKHOUSE bp. 26 May 1841 Stafford
Ellen DUCKHOUSE bp. 22 Jul 1845 Stafford
Peter DUCKHOUSE bp. 15 Mar 1848 Stafford
Mercy DUCKHOUSE bp. 11 Jan 1850 Stafford
Anne DUCKHOUSE b. 1854 Stafford
George DUCKHOUSE bp. 22 Jan 1834 Stafford
m. Elizabeth ?

Mary Ann DUCKHOUSE b. 1857 Coventry
Ellen DUCKHOUSE b. 1860 Wakefield
William DUCKHOUSE b. 1862 Wakefield
Tom DUCKHOUSE b. 1865 Wakefield
Louisa DUCKHOUSE b. 1867 Wakefield
Mary DUCKHOUSE b. 1872 Wakefield

Peter DUCKERS m. **Ann ?**

Joseph DUCKERS bp. 23 Mar 1793 Whitchurch
m. 23 Jul 1821 Lichfield **Julia DAVIES**

Caroline DUCKERS bp. 28 Jul 1822 Lichfield
Ellen DUCKERS bp. 31 Jul 1825 Lichfield
Susanna DUCKERS bp. 12 Apr 1834 Lichfield
Joseph DUCKERS bp. 9 Sep 1838 Lichfield
m. 1 Dec 1859 Colwich **Margaret CARTWRIGHT**

Julia Ellen DUCKERS bp. 30 Sep 1860 Lichfield
Ann Margaret DUCKERS bp. 13 Jul 1862 Lichfield
Ernest Alfred DUCKERS bp. 31 Jul 1864 Lichfield
Florence Elizabeth DUCKERS bp. 25 Feb 1866 Lichfield
Emily DUCKERS bp. 15 Sep 1867 Lichfield
Ada DUCKERS bp. 23 Jan 1870 Lichfield
Lily Margaret DUCKERS bp. 3 Mar 1878 Lichfield

It appears Joseph Duckers (snr) was transported for stealing wool in 1826.

John DUCKHOUSE bp. 1 Apr 1798 Cannock
m. 31 Dec 1824 Darlaston **Elizabeth BYNHAM**

Elizabeth DUCKHOUSE bp. 23 Oct 1825 Weds'fd
Stephen DUCKHOUSE bp. 12 Nov 1826 Weds'fd m. **Isabella ?**

Sarah DUCKHOUSE bp. 10 Jul 1829 Willenhall
Charles DUCKHOUSE b. 1833
William DUCKHOUSE bp. 28 Aug 1836 Weds'fd
Mary DUCKHOUSE b. 1838 Weds'fd
Letitia DUCKHOUSE b. 1842 Weds'fd
John DUCKHOUSE b. 1841 Wed'by
m. Agnes ?

Hannah DUCKHOUSE b. 1871 Wed'by
Agnes M DUCKHOUSE b. 1873 Wed'by
Florence G DUCKHOUSE b. 1877 Wed'by
Lucy Ellen DUCKHOUSE b. 1880 Wed'by

Martha DUCKHOUSE b. 1854
Joseph DUCKHOUSE b. 1855
John DUCKHOUSE b. 1859
Elizabeth DUCKHOUSE b. 1860 Weds'fd
Sarah DUCKHOUSE b. 1864
Stephen DUCKHOUSE b. 1869 Weds'fd
Samuel DUCKHOUSE b. 1865
m. SepQ 1884 Wolv **Harriet COOPER**

Sarah DUCKHOUSE b. 1890
Fanny DUCKHOUSE b. 1896
Bella DUCKHOUSE b. 1898
Samuel DUCKHOUSE b. 1893
m. Oct 1914 Wolv **Harriet WRIGHT**

Joseph DUCKHOUSE
m. 12 Apr 1813 Stafford **Ann PADMORE**

Hester DUCKHOUSE bp. 10 Mar 1816 Stafford
Mary Ann DUCKHOUSE bp. 29 Oct 1817 Stafford
William DUCKHOUSE bp. 28 Jan 1814 Stafford
m1. Prudence ? m2. Mary ?

John DUCKHOUSE b. 1850 Wolv